

COCWA SAFE IS A TRAINING PROGRAMME SUPPLIED BY CHURCHES OF CHRIST IN WA INC.

COCWA Safe is based on materials originally developed by the ChildSafe organisation. We acknowledge ChildSafe for their pioneering work in promoting safe practices in churches.

CREATING A SAFE CULTURE FOR YOUR CHURCH & COMMUNITY

SAFE TEAMS

- Ministry Application
- Working with Children Check (where required for ministry)
- COCWA Safe Training (3 year renewal)
- Policies and procedures that protect people

As a Volunteer you are not expected to be a professional.

As a Volunteer you will give of your best when you are committed to being an excellent servant!



SAFE ENVIRONMENTS

SAFE FIRST AID

Know where all of the First Aid Kits are **located**.

Always ensure that a portable First Aid Kit is taken to **outside events**.

Always ensure that the First Aid Kit is kept **well stocked** and **up-to-date**.

Do you know if there is a plan in place if there is a **medical emergency**?

Who can access and use supplies from the **First Aid Kit**?

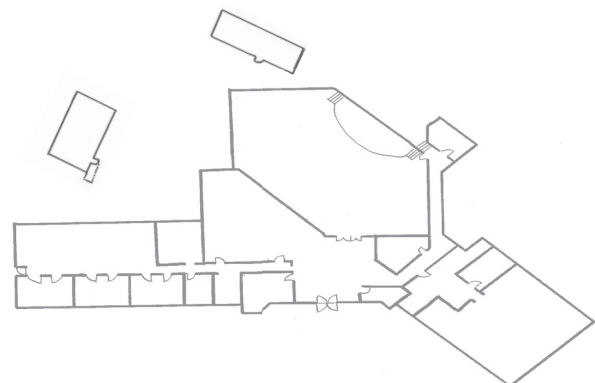
Do you know the **medical professionals** in your church?

Always ensure that you have First Aid trained people on the team or in the ministry area.
Do you know how to help a person through an accident or incident?

SAFE ENVIRONMENTS

SAFE FIRE EMERGENCY

- Where is the muster point?
- Where are the fire extinguishers?
- Who can use fire equipment?
- How do we move people away from fire danger?

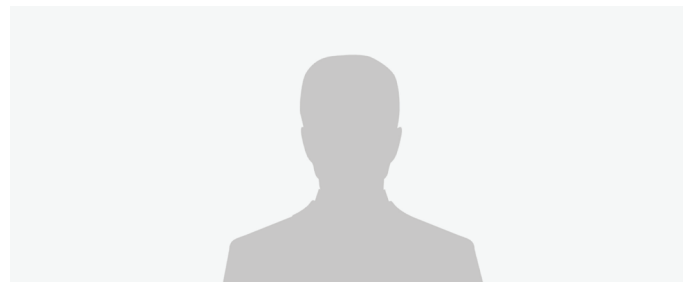


SAFE PEOPLE

What range of behaviours may we be referring to when we speak about "abuse"?

Responding appropriately to abuse.

- Listen carefully.
- Tell the person that you believe them.
- Tell them that it is not their fault.
- Let them know that you will have to tell someone so that they can help stop the abuse.
- Tell the person that you are pleased that they told you.
- Do not promise that you will not tell anyone.
- Go to your "go-to" person as soon as possible.



WHO IS YOUR "GO-TO" PERSON?

The "go-to" person is the person in your church who is responsible to care for and manage **all** reports of abuse.

Safe training has been designed to get people talking! Use these scenarios as a starting point to help ministry teams develop their own scenarios, policies and procedures that are just right for your church. The COCWA website hosts a wide range of regularly reviewed sample Safe policies and forms.

SAFE SCENARIO 1

At a water based activity, a 14 year old girl wearing a bikini is hoisted onto the shoulders of a male leader who plans to initiate a water fight. **What issues are raised here? Consider not only the 'dress' issues but also the nature of safe/unsafe activities.**

SAFE SCENARIO 3

A child exhibits aggressive behaviour that results in several parents bringing a complaint to you.

How do you handle this situation? Consider:

- The child
- The team
- The carer/parent of the child
- The parents of the other children involved.

SAFE SCENARIO 5

Someone on your team (Team Leader/Team Member) asks to meet with you one-on-one. **Under what circumstances is this okay or not okay? What factors do you need to consider in making a decision?**

SAFE SCENARIO 2

You are on a kids ministry/mission team. During the session, one of the children comes and sits in your lap putting an arm around your neck. **What issues are raised here if you are with children: Aged 0-5 years OR Aged 6-12 years.**

SAFE SCENARIO 4

During your weekly programme, one of the Leaders continually refers to participants in the ministry programme using nicknames that he makes up for those he likes and dislikes. **As a Team Member, how might you handle this situation?**

SAFE SCENARIO 6

During your ministry session, you take photos of kids/teens/people. These photos are then used for promotion of events on brochures and on Facebook. **Is this okay?**